

# HAND FRUIT PRESS



V20 - V20 INOX V25  
INOX V30 INOX

## USE AND MAINTENANCE

## USE AND MAINTENANCE

### Models

V20 V20 inox V25 inox V30 inox



model V20  
Frame and painted INOX cage



model V20 / V25 / V30  
Stainless INOX chassis and cage

Model	Size cage	Capacity cage	Weight
	<b>Diam./h. cm.</b>	<b>Lt.</b>	<b>Kg.</b>
V20	20x30	9	10
V20 INOX	20x30	9	10
V25 INOX	25x40	20	18
V30 INOX	XXxXX	25	35

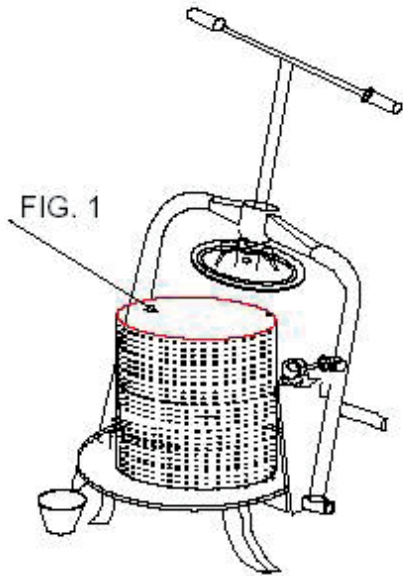
## **USE AND INTRODUCTION**

Thank you for having purchased this mechanical wine press V20-V20 INOX-V25 INOX-V30 INOX. This manual deals with the maintenance and operation of the machine. Reserves the right to make changes at any time without prior notice. This manual should be considered an integral part of the machine and in such should be kept with the machine until it is disposed of.

## **GUARANTEE**

All claims must be made in writing within 8 days of delivery of the machine. The purchaser can exercise his rights under guarantee only if he has fulfilled the conditions relating to the provision of the guarantee, as described in the contract of sale.

At the moment of receipt check that the machine has not been damaged.



**MOUNT THE CAGE ON  
DOCK AND MAKE SURE  
EVERYTHING IS IN  
THEIR PLACE**

FIG. 2



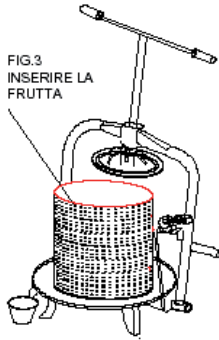
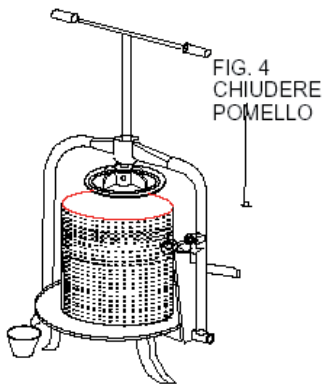


Fig. 3 - Pour the minced fruit in the cage after placing a container under the outlet spout.

FIG. 4

Straighten the bow, close the two knobs and turn the tree “T” clockwise until the full squeezing.



## **TO SET-ASIDE**

At the end of the season, or if you plan a long period of non-use of this equipment, it is recommended:

1) Wash and dry the equipment

**IMPORTANT:**

2) Carefully check for any damaged parts replaced and / or worn.

3) Tighten all the nuts, screws and bolts.

4) Make a thorough lubrication and ultimately protect all the equipment with a cloth (not nylon) and store in a dry place.

**IMPORTANT**

**IF THESE OPERATIONS ARE DONE WITH CARE, THE BENEFIT OF THE USER WILL BE ONLY AS TO RESUME WORK YOU WILL FIND AN EQUIPMENT PERFECT CONDITION READY FOR USE.**

**SPARE PARTS**

Orders for spare parts must be made through your dealer.

Orders for spare parts must always be accompanied by the following information:

1) Type of fruit press;

2) Number of the requested code;

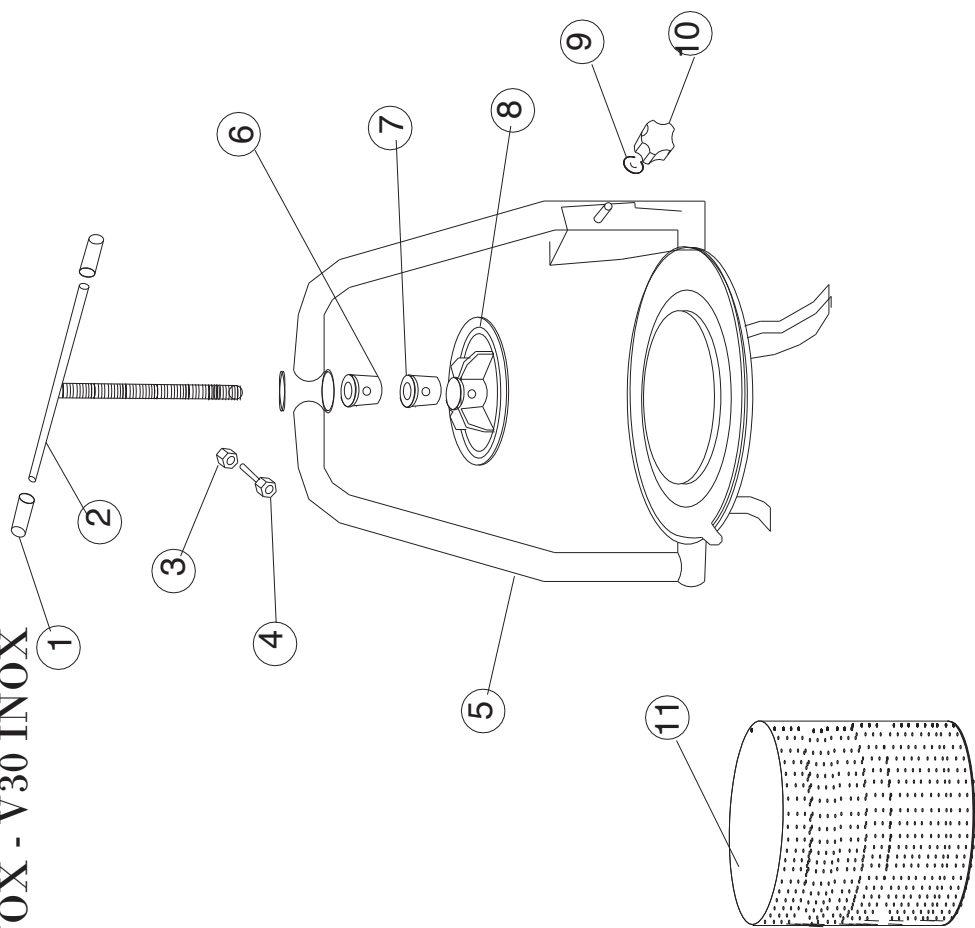
3) Description of the requested party and quantity;

4) Means of transport (to be agreed with the client).

The transport costs are quoted at consignee.

## SPARE PARTS

# V20 - V20 INOX - V25 INOX - V30 INOX





		I		D		ENGL	
RIF.	CODICE	COD. INOX	QUA.	DENOMINAZIONE	BESCHREIBUNG	DENOMINATION	
1	V 20.01	V 20-25.01 X	2	Manopola	Knopf	Knob	
2	V 20.02	V 20-25.02 X	1	Albero a "T" fil.	Tree das "T"	Tree the "T" e.	
3	V 20.03	V 20-25.03 X	1	Dado	Nuss	Nut	
4	V 20.04	V 20-25.04 X	1	Vite 8X25	8x25 Schraube	8x25 screw	
5	V 20.05	V 20-25.05 X	1	Telaio	Rahmen	Frame	
6	V 20.06	V 20-25.06 X	1	Bussola filettata	Gewindehülse	Threaded sleeve	
7	V 20.07	V 20-25.07 X	1	Bussola liscia	Glatten Kompass	Smooth compass	
8	V 20.08	V 20-25.08 X	1	Piatto premente	Pressplatte	Pressing plate	
9	V 20.09	V 20-25.09 X	1	Rondella	Scheibe	Washer	
10	V 20.10	V 20-25.10 X	1	Pomello ch. arco	ch-Regler. Bogen	Bow closing knob	
11	V 20.11	V 20-25.11 X	1	Gabbia	Käfig	Cage	

