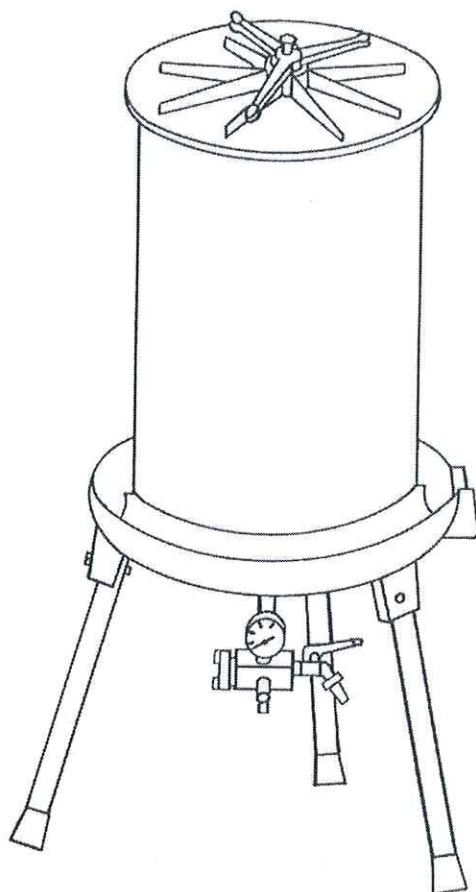


USER AND MAINTENANCE BOOKLET WATER PRESS LT.20-40-80



GENERAL INSTRUCTIONS

Firstly, we wish to thank you for having purchased our product.

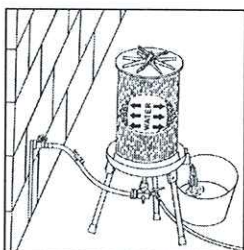
For many years, our firm has been manufacturing oenological equipment for small and medium-size wine makers.

When producing our articles, we always endeavour to make them practical to use, safe, high quality and long lasting; to ensure that they are, please read the booklet carefully.

The water press is a press suitable for pressing chopped apples, destemmed grapes and other product types, providing they have no stones or other hard or sharp parts, which could damage the membrane.

Pressing with the water press is a recent and extremely efficient system which makes use of the existing pressure in the domestic water mains and which, when connected to the press by means of a pipe, delivers water through the central shaft (perforated inside) to the membrane, dilating it evenly towards the outside and consequently compressing the product to be pressed against the perforated stainless steel cage.

The lid, collection base, perforated cage, central shaft and outer flange are all made of AISI 304 stainless steel, the membrane is made of non-toxic rubber.



IMPORTANT: THE MACHINE MUST ONLY BE USED WITH WATER, AND NEVER WITH AIR OR OTHER GASES. In the event of the membrane or cage exploding with the use of air or other products differing from water, besides declining all responsibility, our Company will also demand moral damages and damage to corporate image.

SAFETY STANDARDS

Improper use and incorrect maintenance can cause damage to persons or property. To prevent possible accidents, comply strictly with these safety standards.

POSITIONING Make sure that the machine is positioned in a safe place, on a flat surface, to guarantee the stability of the water press during operation

USE Do not allow children, unauthorized persons or those without sufficient knowledge of its use to utilise the water press.

PROHIBITION The use of air or other gases to inflate the compression membrane is strictly prohibited.

SAFETY VALVES Under no circumstances must the safety valves, set in the factory to 3 or 4 Atm, be tampered with or excluded. In the event of breakage or malfunction, they must be replaced before using the water press again, and can be requested from the manufacturer or authorized dealer.

WARNING Before inflating the membrane with water, make sure that the cage is in its seat, that the lid is inserted accurately on the cage and that the handle is screwed down tightly on the lid.

IDENTIFICATION OF MACHINE PARTS (Tab.2)

A)	HANDLE	G)	COLLECTING BASE
B)	COVER	H)	SUPPORTING LEG
C)	AIR-RELIEF VALVE	I)	EMPTYING TAP
D)	CENTRAL SHAFT	L)	SAFETY VALVE
E)	MEMBRANE	M)	PRESSURE GAUGE
F)	CAGE	N)	DISCHARGE

INSTRUCTIONS FOR USE

CLEANING: Before starting to process it is advisable to thoroughly clean the perforated cage (F), the cover (B), the membrane (E) and the collecting base (G).

CONNECTION: Connect the water pipe (see picture I) with the discharge (N) and connect another pipe to the water-press emptying tap. (I).

LOADING THE PRODUCT: Unscrew the handle (A) and take off the cover (B). Place the inner bag into the cage (F) so that it fits closely to its inner wall. Load the product you are going to press by distributing it uniformly (this operation is very important); fold the sack inside the cage, put the cover (B) and screw the handle (A).

OPERATION: Before turning on the delivery tap it is necessary to open the air-relief valve (C). Then you can turn on the tap. The air-relief valve has to be closed as soon as water starts coming out. Cover the entire water press with the outer bag, making sure that the lower edges are positioned inside the collection base, to prevent splashing. Pressing will now begin and terminates when the pressure reaches 3 Atm in the lt. 80 water press and 4 Atm in the lt. 20-40 water presses.

At this point turn off the water supply, wait until all the product has been delivered, remove the outer bag and open the discharge valve. Once all the water has been discharged from inside the membrane remove the cover, take out the pressing residue and repeat the operation from the beginning.

ORDINARY MAINTENANCE: The water press does not require special maintenance; thorough cleaning is recommended and it is advisable to cover the press when storing to protect it from dust.

REPLACING THE MEMBRANE

To replace the membrane carefully observe the drawing Tab.2 and perform the following operations: loosen the lock nut (N°4), remove the washer (N°5), the O-ring (N°6) and the flange (N°7); unscrew the connection pipe (N°20), the bend (N°19) and the lower lock nut (N°18); now remove the shaft (N°13) from the base and replace the membrane.

To reassembly it is advisable to follow the disassembly diagram, making sure that the ribbings of the membrane are in the seat of the flanges (N°8 and N°16). Replace the O-rings (N°6-10-15) if they are worn.

SPARE PARTS (Tab.3)

N°	DESCRIPTION
1	AIR-RELIEF VALVE
2	HANDLE
3	COVER
4	STAINLESS STEEL TOP LOCKNUT
5	STAINLESS STEEL WASHER
6	OR
7	TOP FLANGE I
8	TOP FLANGE II
9	MEMBRANE
10	OR
11	STAINLESS STEEL WASHER
12	CAGE
13	CENTRAL SHAFT
14	STAINLESS STEEL WASHER
15	OR
16	LOWER FLANGE
17	COLLECTING BASE
18	STAINLESS STEEL LOWER LOCKNUT
19	FF ELBOW
20	CONNECTING DISTANCE PIPE
21	LEG-BOLT
22	PRESSURE GAUGE
23	EMPTYING TAP
24	CONNECTING BLOCK
25	SAFETY VALVE
26-27-28	COMPLETE SWIFT
29	SUPPORTING LEG
30	RUBBER CAP FOR LEG

GENERAL CONDITIONS OF SALE

TRANSPORT: Borne by the purchaser

CLAIMS: Claims are only accepted within eight days of receipt of the goods and no returns are accepted unless authorized by us and carriage free.

Goods travel at the risk and peril of the customer.

IMPORTANT: The manufacturer declines all responsibility for failure to comply with our booklet or improper use of the machine.

If you are unsure of how to perform any operation, contact the manufacturer or authorized dealer.

RESERVATIONS: We are not responsible for breakages or damages deriving from uses differing from those for which the goods are intended, or for use that does not comply with the capacity and flow rate of the goods.

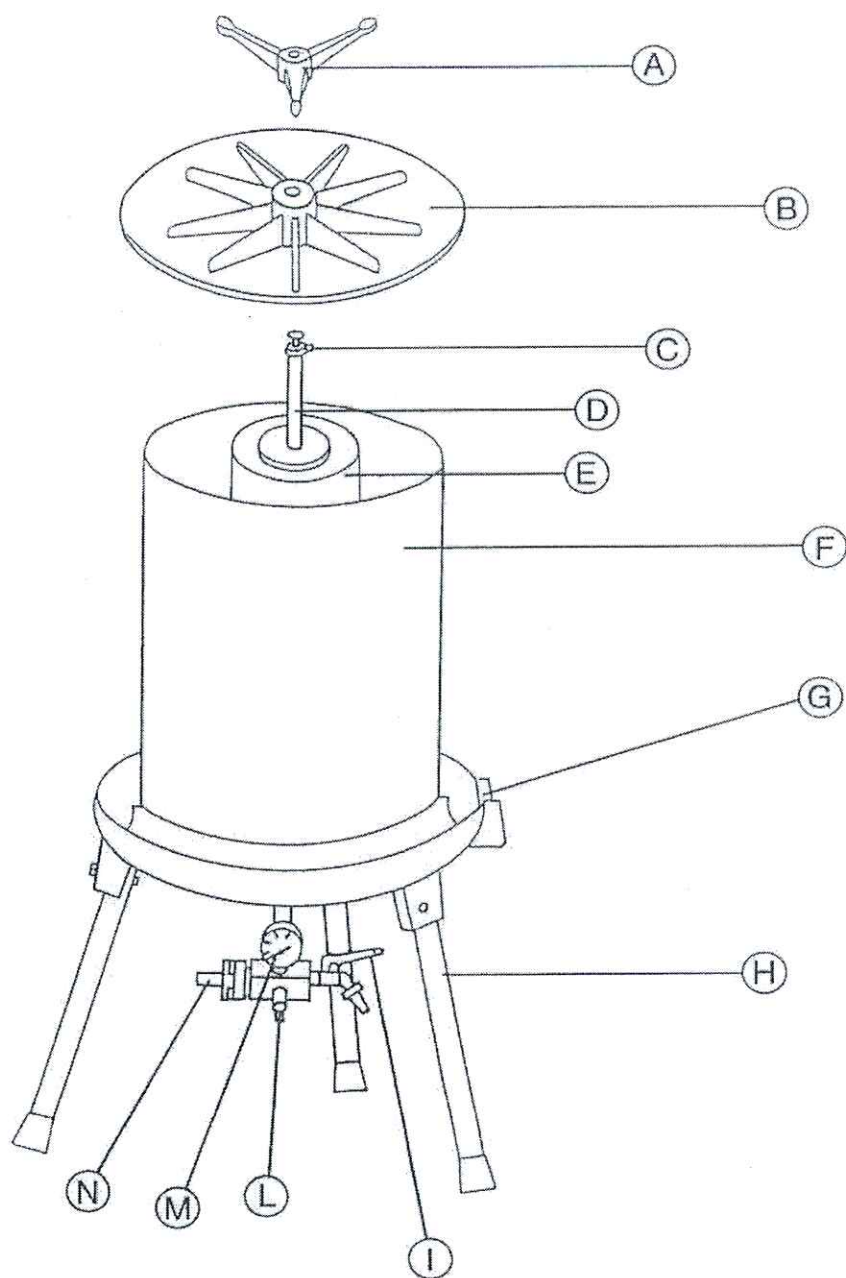
Flaws and defects caused by wear of parts naturally subject to wear, or returned parts that have been dismantled, tampered with or repaired outside our headquarters are not covered by warranty.

WARRANTY: Our products have been carefully tested and inspected and are guaranteed for 2 years from delivery.

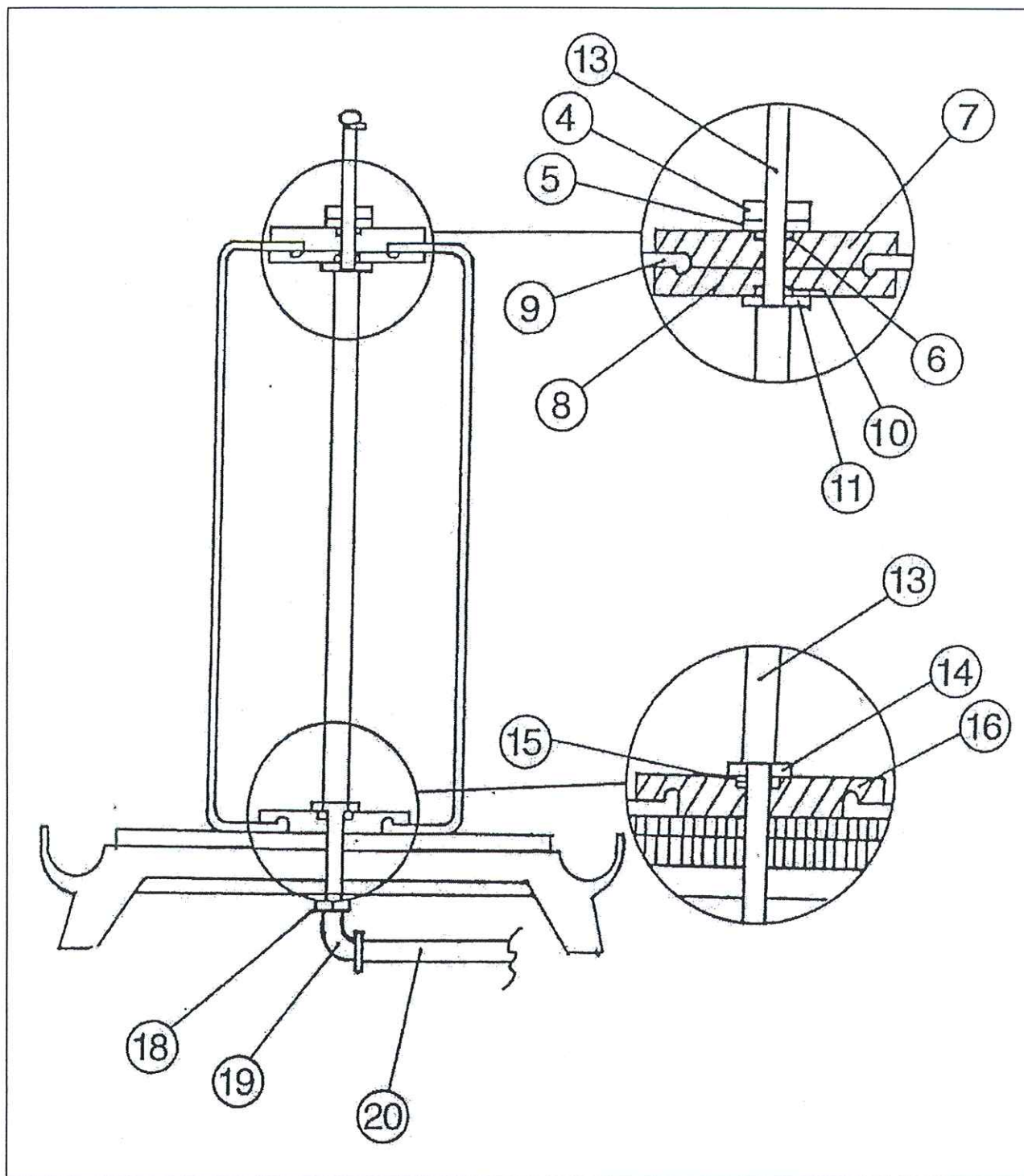
Our responsibility is limited to the replacement of any parts found to be defective after careful examination and not caused by improper use by the operator and to be carried out at our headquarters or at the customer's premises charging for transport and labour costs.

TECHNICAL DATA: The technical data in this booklet are informative and not binding. The manufacturer reserves the right to make modifications to products without prior notice.

TAV.1



TAV.2



TAV.3

